

# SAMRUDHI SHREEDHI COLONY PROJECT



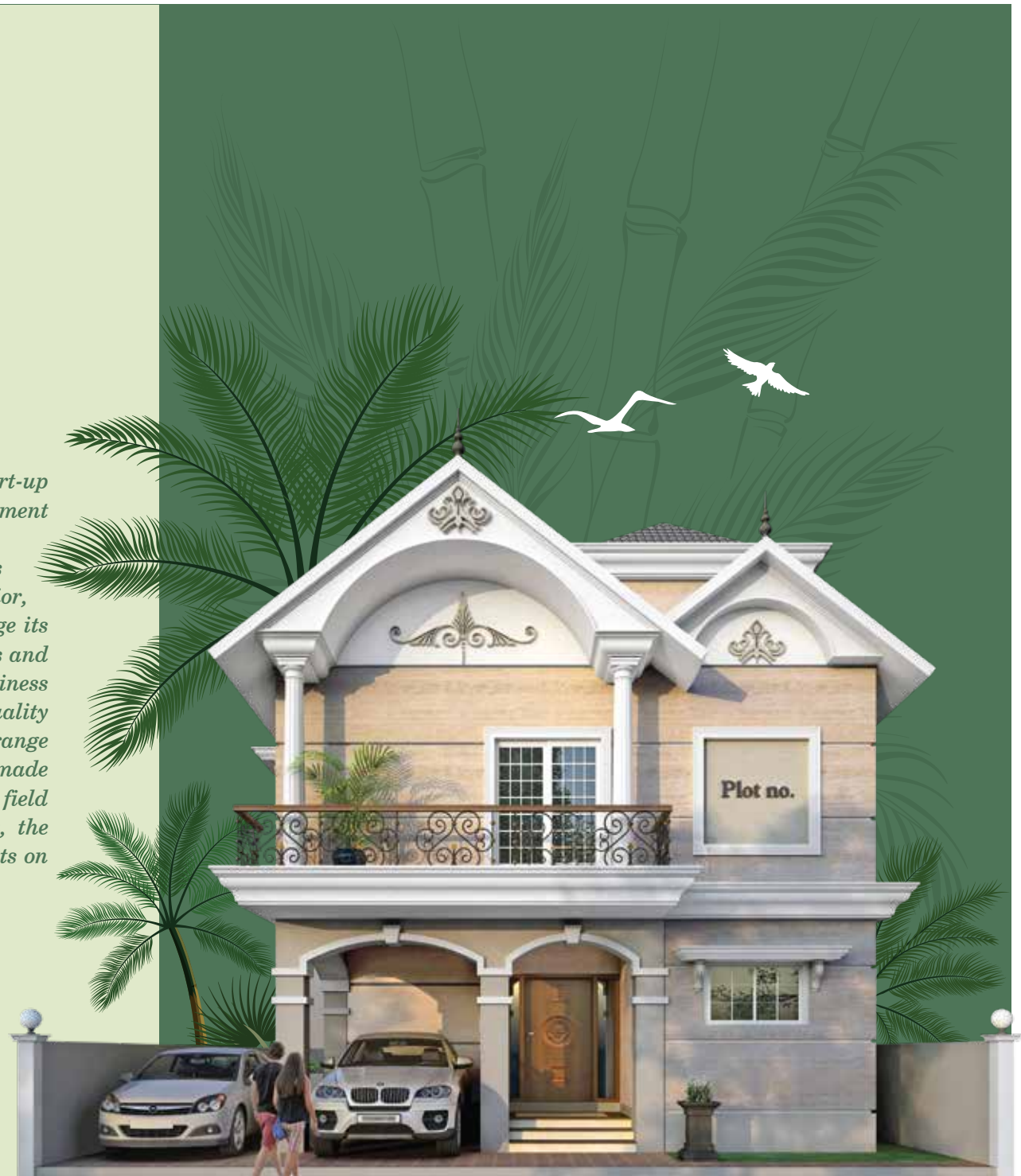
**ANANT VENTURES**  
JOINING HANDS IN BUILDING NATION

Sea



# ABOUT US

*ANANT LAXMI AND SONS VENTURES PVT LTD is a start-up company, Established to generate more than a hundred employment for the educated youth of Goa It is a complete customer-centric enterprise operating in six Principal business verticals- Builders and Developers, Hospitality, Construction, Infrastructure, Interior, Project Management, and Florist which are designed to leverage its complementary competencies. As a result, high-quality products and services are delivered at competitive prices. Synergy among business verticals helps create new value curves by achieving both high quality and cost advantage. Since its inception, it has delivered a wide range of projects and services for its chosen segments which have made ANANT VENTURES become one of the emerging leaders in the field of realty development, infrastructure, and hospitality. Today, the company is known for its integrity, and ability to deliver projects on time with the highest quality and stands as a proud statement of confidence and customer delight.*





## AN EXCLUSIVE COLLECTION OF CLASSICAL VILLAS









- ◉ 4 BHK with living room, kitchen, dining multi purpose hall etc.
- ◉ Independent Plot sizes range from 2000 sq.ft to 3000 sq.ft
- ◉ Villa sizes range from 2100 SFT to 2800 SFT.
- ◉ Located at the heart of Goa, in Borim Village Ponda Taluka in the stat of Goa.
- ◉ Built by **ANANT VENTURES** Projects among the most admired infrastructure developers in GOA.

*Starting from 1.15cr to 1.50 cr*



## CLUB HOUSE

## AMENITIES & FACILITIES

-  *Gym*
-  *Swimming Pool*
-  *Children Play Room*
-  *Reading Room*
-  *Table Tennis Court*
-  *Maintenance Office*
-  *Badminton court*
-  *Library*



EAST FACING VIEW



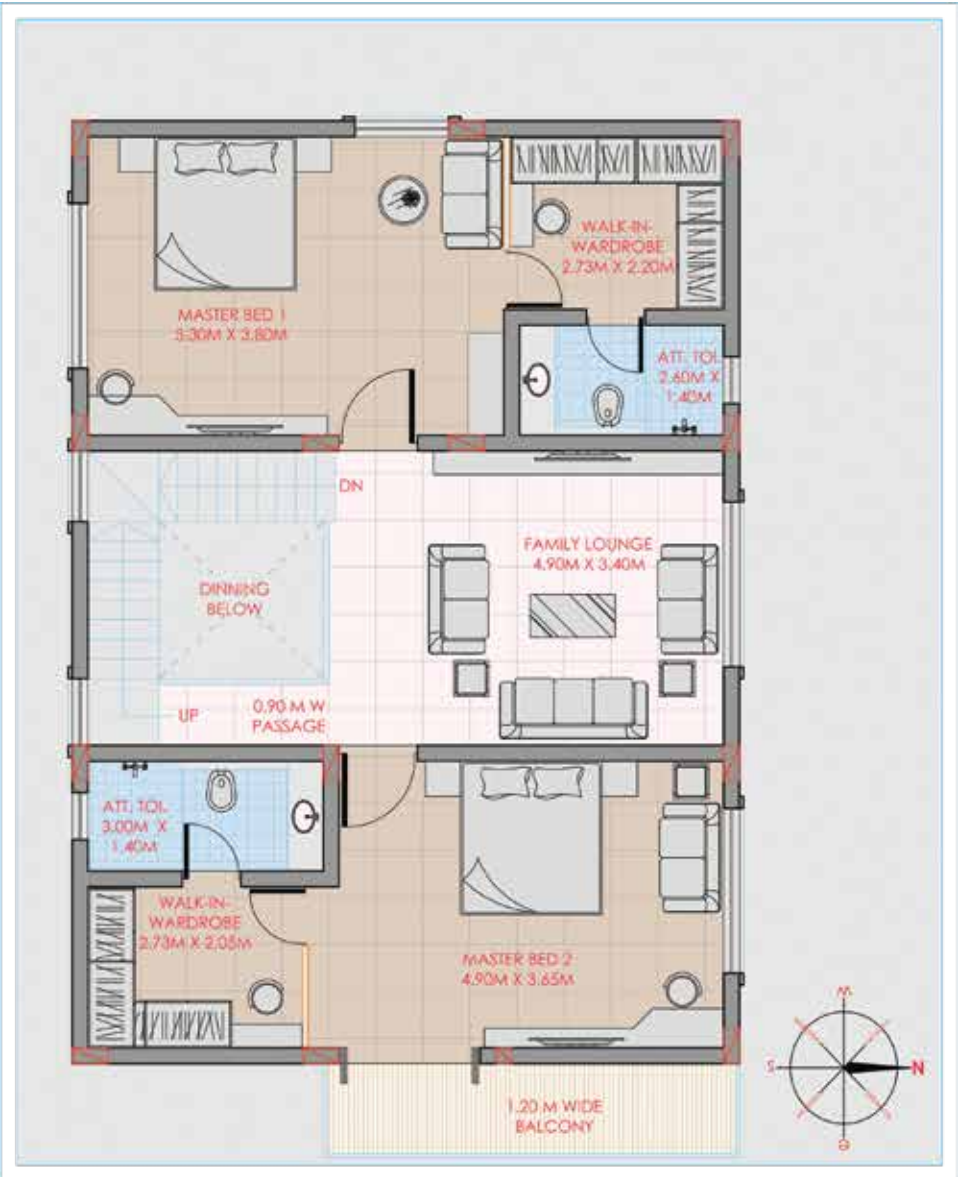


**NORTH FACING VIEW**





GROUND FLOOR PLAN



FIRST FLOOR PLAN

# EAST FACING VILLA





GROUND FLOOR PLAN

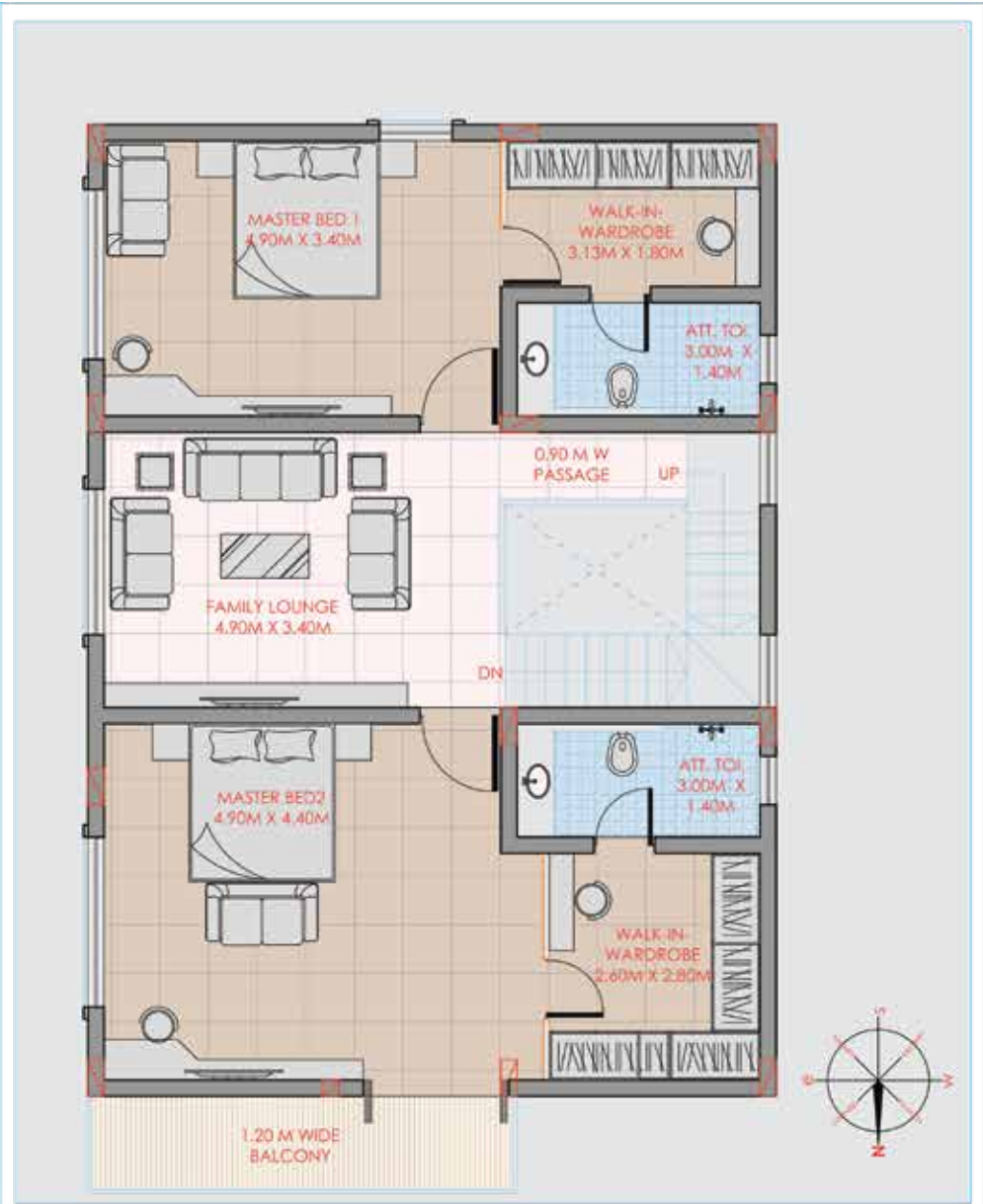


FIRST FLOOR PLAN

## WEST FACING VILLA



GROUND FLOOR PLAN

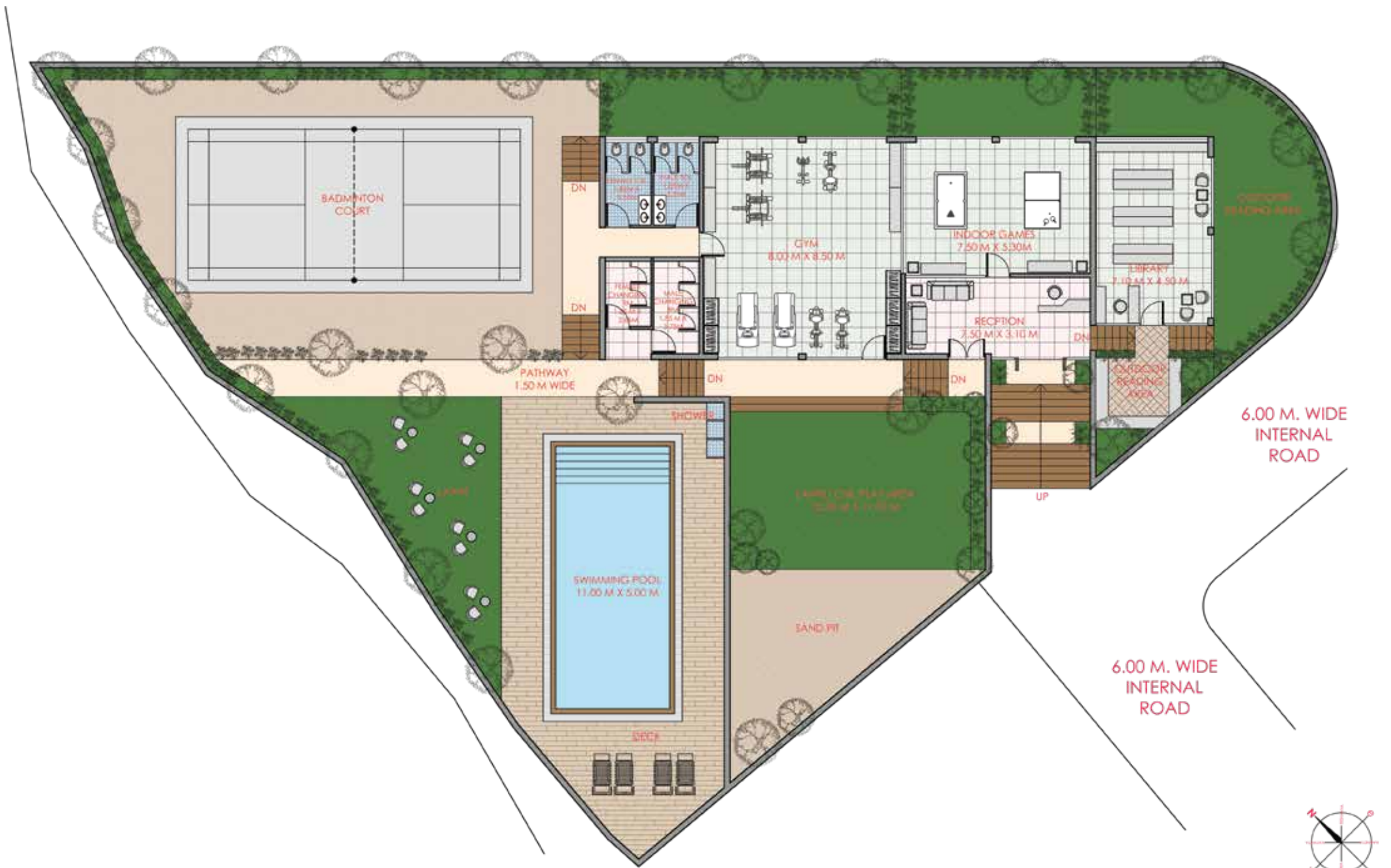


FIRST FLOOR PLAN

# NORTH FACING VILLA



**SITE PLAN**



**CLUB-HOUSE FLOOR PLAN**





# SAMRUDHI SHREEDHI COLONY PROJECT

## DREAM LOCATION

- Dabolim Airport..... 30km*
- Mopa Airport..... 66km*
- Ponda Busstand..... 7km*
- Margao Busstand..... 15km*
- Margao Railway station..... 18km*
- School and collage..... 1km*
- City and engg. collage..... 5km*
- Panjim City..... 30km*
- Bambolim and Miramar beach..... 25km*
- Bondla Wild life Century..... 23km*
- Dudhsagar Falls..... 49km*
- Bambolim GMC Hospital..... 38km*
- Major Private Hospital..... 5 - 10km*

**AERIAL VIEW**



MEDITATION AREA





## INFRASTRUCTURE / UTILITIES

*Solar*

*Rain Water Harvesting*

*Water Treatment Plant*

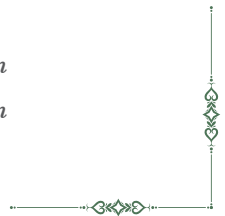
*Sewage Treatment Plant*

*Provision For Telephone*

*Provision For DTH / Cable Connection*

*Provision For Broad Band Connection*

*Back Up Power For common area*





## SPECIFICATIONS

### **STRUCTURE**

*RCC Framed Structure With Solid red stone masonry Block Walls (23 mm and 150 mm Thick)*

### **DOORS**

*Main Door Of Teakwood: Teak Wood Frame with Paneled Shutters with good quality hardware fittings  
Internal Doors: Polished Timber Frame with Flush Shutters with good hardware  
Balcony Doors: UPVC Doors with Mosquito Mesh*

### **WINDOWS**

*UPVC Windows*

### **FLOORING**

*Entrance Lobby: Living, Dining,  
Kitchen and Passages: Galvanized Vitrified Tile*





## SPECIFICATIONS

### **BEDROOMS**

*Laminated Wooden Flooring / Galvanized Vitrified Tile*

### **BATHROOMS**

*Designer Ceramic Tiles Balconies, Terrace and Utility:  
Anti-Skid Ceramic Tiles*

### **DADO KITCHEN**

*2 Feet Band of Ceramic Tiles Above Granite Counter  
Top Rest of The Walls with Premium Quality Emulsion  
Bathrooms: Designer Ceramic Tiles*

### **STAIRCASE AND HAND RAILING**

*RCC Structural Staircase with Granite Finish stainless  
steel 304 Railing with hand Railing*

### **KITCHEN**

*40 mm Thick Granite and Stainless-Steel  
Single Bowl with Drain Board*





## SPECIFICATIONS

### **BATHROOMS**

*Jaquare / Hindware / Cera For Sanitary and CP Fixtures and Fittings. Bedrooms Toilets- Granite top with Under Counter Wash-Basin with Hot and Cold-Water Mixture Bedroom with Attached Toilet Shall Have a Shower Area with Hot and Cold mixture and Cockroach Trap EWC And Wash-Basins Made from Ceramic Ware Health Faucet and Flush Valve in All Toilets*

### **PAINTING**

*Asian / jsw paint of internal walls  
And apex Asian / jsw for exterior walls*

### **ELECTRICAL**

*Modular Switches of Anchor Roma*

*Homes for  
Joint family*





## Quality Homes for Everyone

### SITE ADDRESS

Samrudhi Shreedhi colony, Shirshire, Top cola, Borim, Ponda, Goa. Near Govt. Primary School. Pin 403401

+91 9028186699  
Contact@anantventures.com



### HEAD OFFICE

B-368/S-2, 3rd Floor, Patel Estate, Alto Betim, Porvorim, North Goa, GOA, INDIA-403101

+91 9975668609  
cmd.anantlaxmi@gmail.com

www.anantventures.com

Website



JAYSINH V. DESHMUKH  
M.E. Structural  
Structural Consultant  
Chartered Engineer

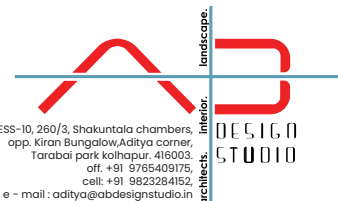
ADDRESS : L5, SKYVILLE APARTMENT, INGALE NAGAR, KOLHAPUR - 416004  
TEL. 0231 - 2693744, MOB. +91 9850639923  
Email. jaysinhvdeshmukh@gmail.com

RERA NO: PRG008221737

Vibhav Naik  
Engineer Marcela Goa

Aditya Begumpure  
Architect

OFFICE ADDRESS-10, 260/3, Shakuntala chambers, opp. Kiran Bungalow, Aditya corner, Tarabai park kolhapur. 416003.  
off. +91 9765409175,  
cell: +91 9823284152,  
e - mail : aditya@abdesignstudio.in



location

